



Support material for *Get Messy!* September–December 2022

September: Share like sheep

Mealtime card

- Who has shown you what it is like to be a sheep?
- How do we reveal what is really in our hearts?
- Can you think of a way that you can serve Jesus by serving others?

Question to start and end the session

So... are you a sheep or are you a goat?

Social action

There are lots of practical ways that we can respond to the teaching in this parable through social action, perhaps by collecting food for a homeless shelter or food bank, or raising money for a local refuge. This session may lead to more significant action, perhaps beginning a more regular initiative such as starting a soup kitchen or launching a school uniform bank. The challenge is to consider how we serve Jesus through serving others.

September: Share like sheep

1



6



2



7



3



8



4



9



10



September: Share like sheep

No	Images	Sheep or goat?
1		
2		
3		
4		

September: Share like sheep

No	Images	Sheep or goat?
5		
6		
7		
8		

Answers

Sheep - 1, 4, 5, 7

Goat - 2, 3, 6, 8

October: God's love for the planet

Mealtime card

- Have you ever questioned God?
- What does trust in God look like?
- How can we help to look after God's whole creation?

Question to start and end the session

So... how do we look after God's creation?

Social action

Look up the work of an environmental movement, or set a challenge to go plastic-free, one item at a time (look up 'Plastic Free July' for ideas), or look up craftivism and send some craft items to your MP to raise awareness of environmental issues.

October: God's love for the planet

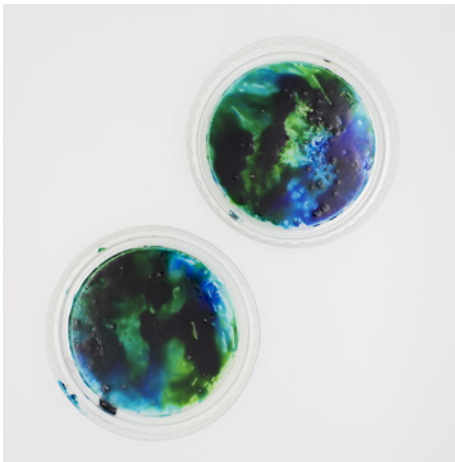
1



6



2



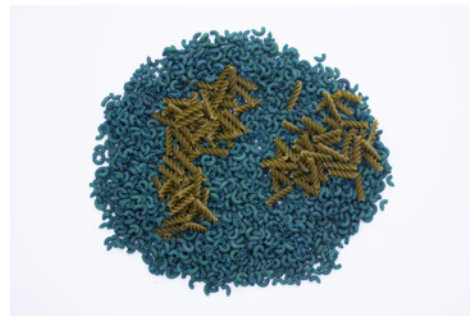
7



3



8



9



4



10



October: God's love for the planet



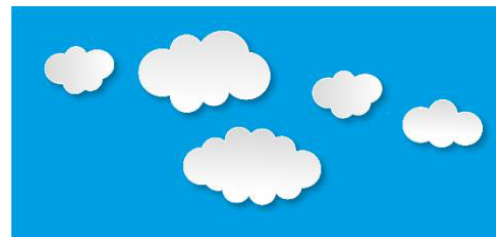
Nature Scavenger Hunt

Can you find something for every colour of the rainbow?



How many different clouds can you spot?

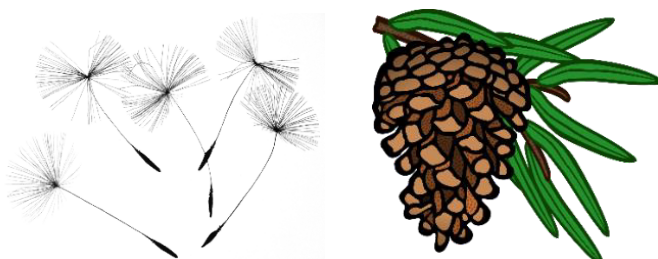
Can you see anything in the shape that the clouds are making that you can recognize? Maybe a cow? A mushroom? A polar bear hugging a melon?



Can you spot a leaf? A flower? A bird? A beetle? A caterpillar?



How about a seed? Or a pinecone?



November: ALL are welcome in God's family!

Mealtime card

- Who are the people in our community who often get left out or are not welcomed?
- What are some ways we can reach out and build relationships with them?
- What are some things that help you to feel welcomed and included in a new community?

Question to start and end the session

So... how do we welcome everyone into God's family?

Social action

This session is the perfect starting place for social justice action by the members of your Messy Church! Why not try to find a charity or group in your area who care for those who are outcast and need support? (For example, we have a mental health outreach in our parish which would be an excellent place for our Messy Church families to build connections and develop new relationships.) Alternatively, perhaps you could find a charity that helps girls access education in countries where that is not allowed, or a group that works with the marginalised. There are so many possibilities – find one that the people in your Messy Church are passionate about and make a difference!

November: ALL are welcome in God's family!

2



5



3



7



4



8



9



December: We were there - are you?

Mealtime card

- Why do you think God chose the shepherds to be the first to find out about Jesus?
- What have you found out about Jesus' birth that you didn't know?
- The angels were really excited. What are you excited about?

Question to start and end the session

So... what would you tell others about the birth of Jesus?

Social action

Christmas is a time some people feel very alone. As a family, send a Christmas card or take a cake to those in your area who might be cheered by a little company.

December: We were there - are you?

1



6



7



2



3



8



5







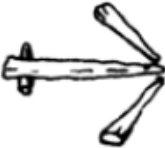










9



December: We were there - are you?

Tracking Signs - using stones or sticks or long grass or a mixture of all three!

	Rocks	Pebbles	Sticks	Long Grass
Straight ahead				
Turn right				
Turn left				
Do not go this way				

I have gone home



Number of paces
in direction indicated

